

Three-phase multifunctional static electricity meters **AMT B2x-Fx4TxIx** are determined for measurement of active, reactive and apparent electric energy, instantaneous active, reactive and apparent power for consumption and supply, maximum demand for active, reactive and apparent energy, voltage, current and power factor in 3-phase 4-wires networks in direct and semidirect connection. They enable measurement of energy in rates controlled by internal clock (up to 4 rates) or externally controlled in two rates.

The measured values stored into special registers according to the OBIS codes are displayed on LCD in cyclic or step mode. The electricity meters can be parametrized and readout by using optical probe AMOS type and software supplied by the manufacturer. The test pulses are indicated by red LEDs, they are proportional to the active and reactive consumed energy. Electricity meters can be produced in version with *summary measuring mode* (unidirectional register) or in version with *separate mode* (consumption - supply).

Highlights

- Measurement of energy, power, voltage, current, power factor... (+A, -A, +R_i, -R_i, +R_c, -R_c, +R, -R, +S, -S, +P, -P, P_{max}, U, I, PF...);
- Measurement of active energy per phases L₁, L₂, L₃;
- Historical records of the selected register contents created at the end of a calendar month - up to 15 month records;
- Event records (about influence of magnetic field, missing voltage, covers removal,...) – number of events with date of their occurrence;
- Data record in three independent profiles with selectable channels (20 channels);
- Passive impulse SO outputs (particularly for active and reactive energy);
- Communication interface: optical and RS485 (EN 62056-21, C mode);
- Possibility of equipping with a switch (SCS - Supply control switch, only meter in cases „E“ and „9“) and auxiliary relay 2 A;
- Welded case on a customer request;
- Compliance with EN 50470-1, EN 50470-3, EN 62052-11, EN 62052-21, EN 62053-21, EN 62053-23, EN 62054-21, EN 62056-6-1 and with requirements of European Parliament and EC Directive 2014/32/EU (MID);
- Electricity meter is delivered with conformity assessment (initial verification) for active energy billing purposes.

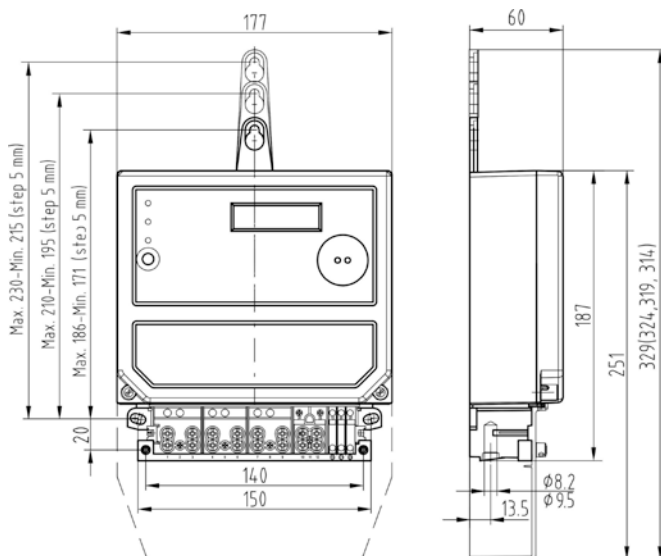


Electricity meter in case „E“

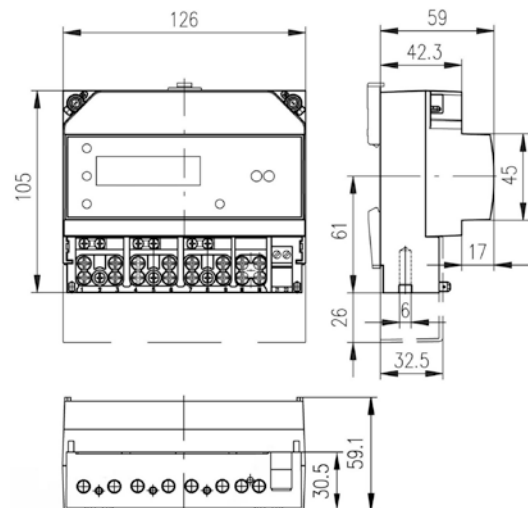


Electricity meter in case „C“

Dimensional drawings



Case „E“ up to 100 A with drilling of terminals $\phi 8,2$ mm
Case „9“ up to 120 A with drilling of terminals $\phi 9,5$ mm



Case „C“ do 65 A with drilling of terminals $\phi 6$ mm

Technical data

Accuracy class active / reactive energy	A, B, (MID), 2, 1, / 3 a 2
Reference voltage [V]	3 x 230/400 (-20%,+15%)
Reference frequency [Hz]	50 (± 2 %)
Reference current I_{ref} / Nominal current I_n [A]	5 and 10 / 5
Transient current I_{tr} [A] direct/semidirect connection	0,5 and 1 / 0,25
Starting current I_{st} [mA]	< 10
Minimal current I_{min} [A] direct/indirect connection	0,25 and 0,5/ 0,05
Maximal current I_{max} [A] direct/indirect connection	65 (case C), 100 (case E), 120 (case 9) / 10
Power consumption - voltage circuit [VA/W]	Buck source without RS485: 0,88/ 0,33 for phase Buck source with transformer for RS485 ≤2,05/ 1,32 (L1); 0,88/ 0,33 (L2 and L3) MYRRA source (also for RS485) ≤ 1,18 / 0,60 for phase Buck source with MYRRA for RS485 ≤ 1,42/ 0,55 in L1, 1,10/ 0,40 (L2, L3)
Power consumption - current circuit [VA]	≤ 0,01 at I _{ref}
Impulse constant for test output k_{TO} [imp/kWh]	1000 (setable by manufacturer from 1 to 30000)
Impulse constant for impulse output k_{SO} [imp/kWh]	1000 (k _{TO} /x; x = 1 – 10)
Transistor output SO	24 V / 30 mA
Operating temperature	- 40 °C up to + 70 °C
Mean temperature coefficient [%/K]	≤ 0,04
Terminals - current; voltage; auxiliary case up to 65 A / up to 100 A / up to 120 A [mm]	∅ 6 ; ∅ 3 ; ∅ 3 / ∅ 8,2 ; ∅ 3 ; ∅ 3 / ∅ 9,5; ∅ 3 ; ∅ 3
Degree of protection	IP53 for case E and 9; IP51 for meter, IP20 for terminal block in case C
Meter dimensions w x h/h' x d [mm]	126x135x59 mm (case C), 177x251x60 (case E and 9)
Fixing holes distance w x h [mm]	150 x 215-230 (case E and 9)
Weight [kg]	≤ 1,23

Data profile selection

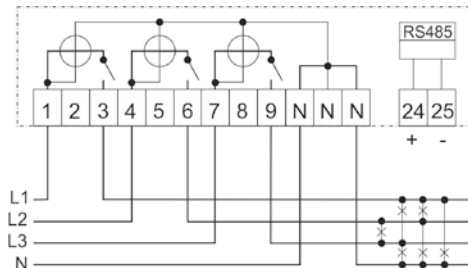
Number of items for selection to the profile	80 (energies, powers, voltages, currents, power factor...)
Number of selected items (channels)	20 (for every profile)
Programmable registration period	1, 2, 3, 5, 10, 15, 20, 30, 60 min (P01 and P02 profiles); 1, 2, 3, 4, 6, 8, 12, 24 (P03 profile)

Note: Profile data size depends on the number of selected profile items, registration period and used memory. At one profile item and registration period 15 minutes data profile can cover a minimum of 846 days using a base memory.

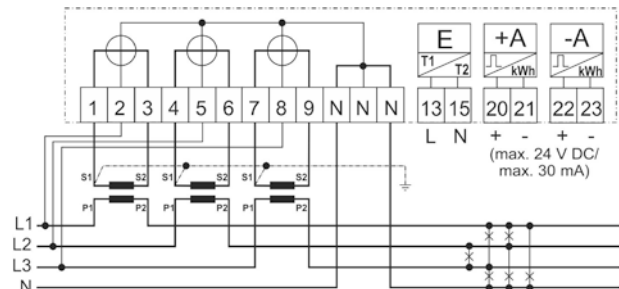
Marking of meters

AMT B2x5- Fx7 x8Tx10I x12	
AMT B2 type designation	
x₅	overload capacity: 3 - 200 %, 4 - 400 %, 5 - 500 %, 6 - 600 %, 8 - 800%, A - 1000 %, B - 1200 %, C - 1300 %; D - 1600 %, E - 2000 %, F - 2400 %
F	basic version: multifunctional electricity meter with LCD and RTC
x₇	measured energy: A – active, R – active and reactive, F - active - Ferraris mode, S – apparent
x₈	network connection: 4 - phase 4-wire
T	current converter: transformer
x₁₀	case version: C – up to 65 A (drilling of terminals ∅ 6 mm); E – up to 100 A (drilling of terminals ∅ 8 mm), 9 - up to 120 A (drilling of terminals ∅ 9,5 mm)
I	type of applied processor: T1
x₁₂	special modules: E – external control of the second rate, 4 - RS 485 interface, Y - auxiliary relay 2 A, M – Mesh communication interface, A - external antenna, S – SCS - supply control switch

Connection diagrams - examples



Direct connection with supply control switch and RS 485 interface



Semidirect connection with external tariff control and transmitting outputs of active energy +A and -A

Ordering data

Type of meter and version; reference voltage and current range I_{ref}, I_{max}; special requirements for data profile; number of units; required delivery terms.